

The Hackney case



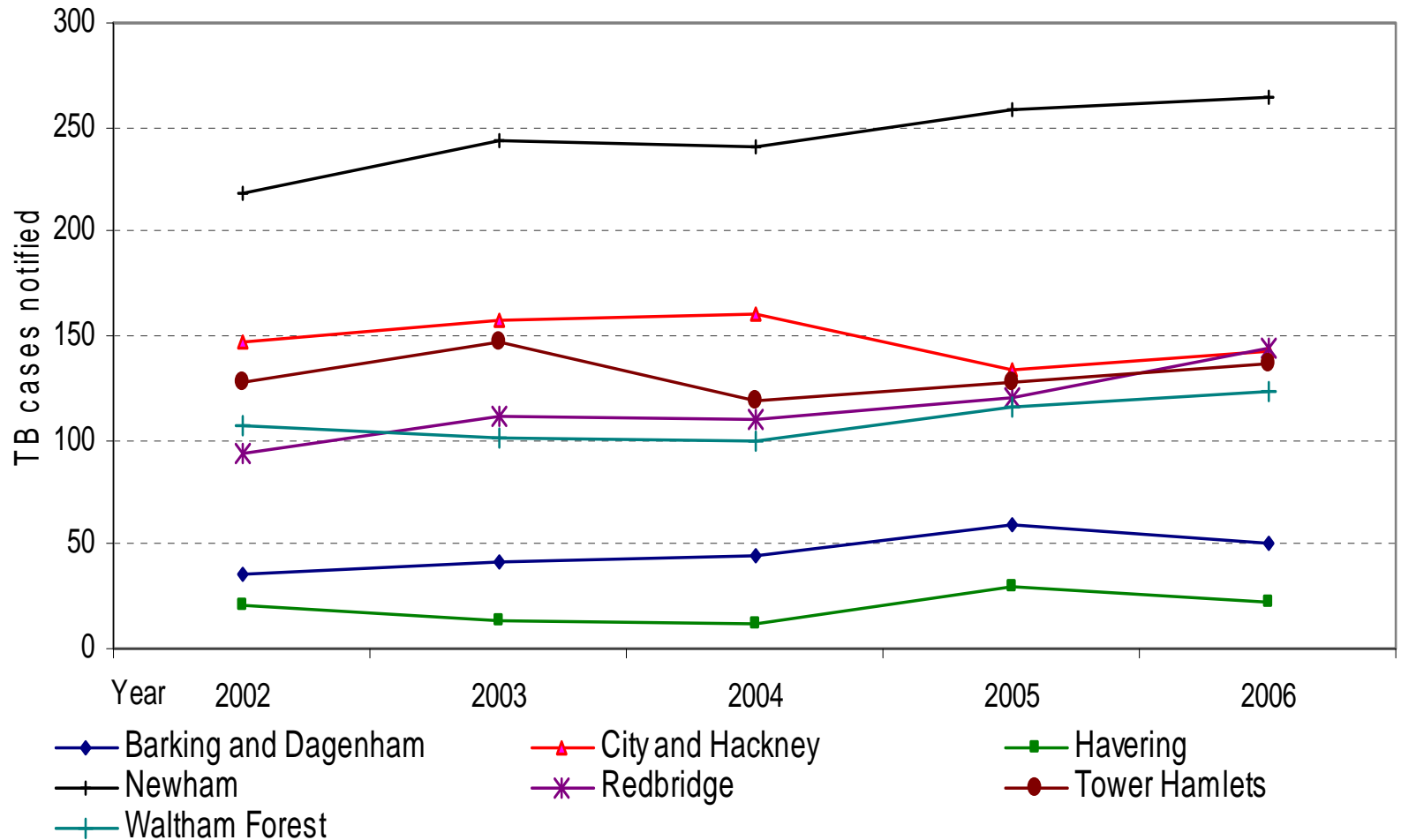
- Resurgence of TB in UK since 1980s up to 8,496 cases in 2007 (39% in London alone)
- Inner London borough (East-end)
- Diverse highly mobile population
- 210,000 people in small geographical area
- High levels of BME groups
- High proportion non-English speakers

Social conditions

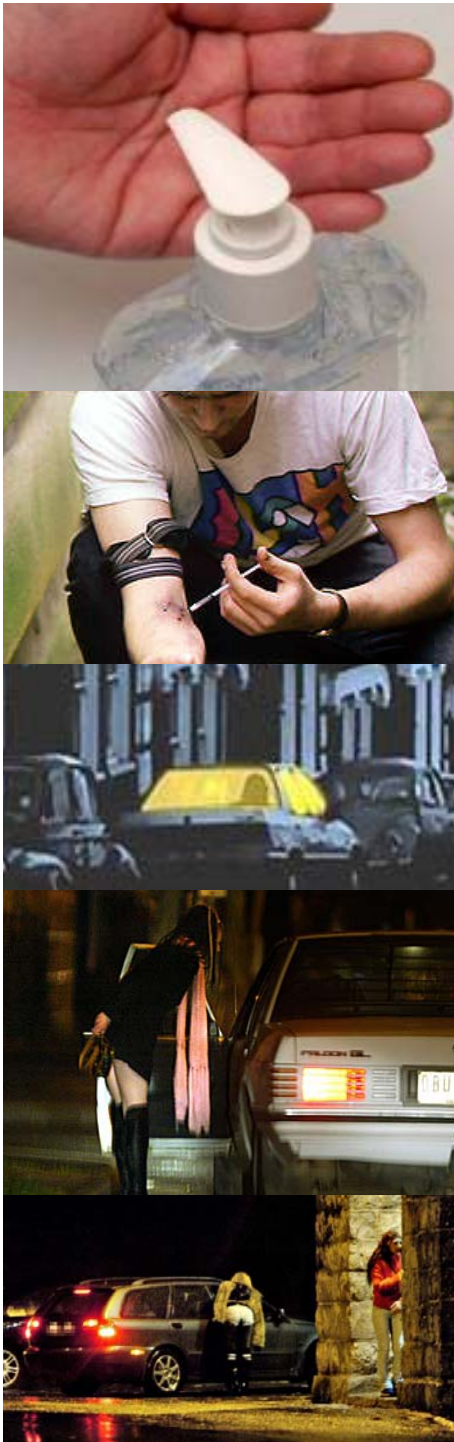


- High levels of overcrowding (106.4 people per hectare vs 45.6 London average)
- Poor accommodation
- High deprivation index
 - ◆ Income support
 - ◆ Unemployment / benefits
 - ◆ Low rates of ownership
 - ◆ Housing estates
- A bit of an image problem

TB in North-East London



there were 136 TB notifications in 2006 (incidence of 66.2 per 100,000 vs.14 per 100,000 in UK)



Hackney TB cases

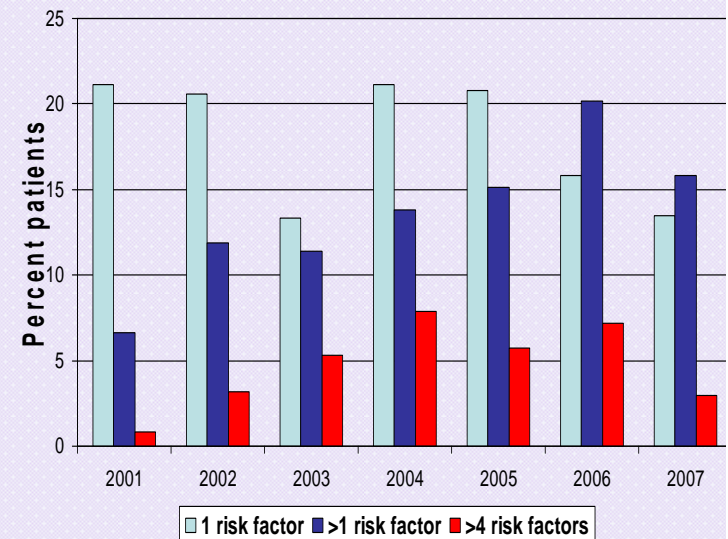
Reflects ethnic diversity

- ◆ ~ 50% born abroad
- ◆ ~ 30% UK born who travelled to HBCs
- ◆ ~ 20% UK born

D.O.T. and risk factors

- ◆ 50% alcohol abuse
- ◆ 53% substance misuse
- ◆ 17% homeless street
- ◆ 7% homeless hostel
- ◆ 30% mental ill health
- ◆ 83% unemployment
- ◆ 17% sex worker
- ◆ 20% language
- ◆ 20% previous TB tx
- ◆ 33% INH resistant

Complex needs



Changing patterns of migration

- East-end London a magnet for migrants
 - ◆ Economic migrants
 - ◆ Gypsies and travellers
 - ◆ First and second generation descendants from Africa, Indian subcontinent, South-East Asia, OJ
 - ◆ Refugee and asylum seekers
 - ◆ High influx of Easter-European nationals
 - ◆ 2012 Olympics





Migrant communities, RAS

■ Risk factors

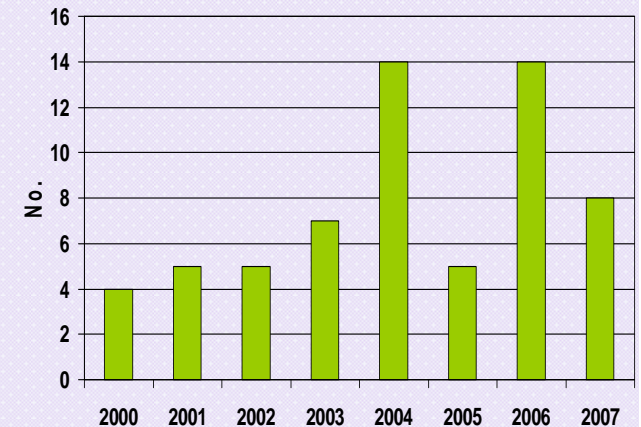
- ◆ Reduced access to health care
 - ❖ Language barriers
 - ❖ Cultural/religious issues
 - ❖ Lack of understanding
 - ❖ Fear of discrimination
 - ❖ Psychological distress
 - ❖ Lack of trust or respect for the system
- ◆ No egalitarian participation in society
 - ❖ Disrupted social networks / families
 - ❖ Social exclusion
 - ❖ Stigmatisation
 - ❖ Economic barriers

Homelessness

- An increasing social and public health problem worldwide
 - ◆ “**absolute**” without physical shelter
 - ◆ “**relative**” have a physical shelter, but it doesn't meet basic standards of health and safety
- Individual risk factors
 - ◆ Altered Social Networks
 - ◆ Alcohol abuse / substance misuse
 - ◆ Overcrowding / poor living conditions
 - ◆ Stress
 - ◆ Poor nutrition / Smoking
 - ◆ HIV infection



Homelessness





Homelessness

■ Altered perception of ill health

- ◆ *"With my circumstances, I expect to be a bit ill"*

■ Altered health seeking behaviour

◆ Take a pragmatic approach

- ❖ *"I only bother to get help when I'm really sick"*
- ❖ *"My GP can't be bothered with me – homeless people are treated differently"*

◆ Services need to go to them

- ❖ *"I've got so many things going on in my life that are more important"*

Life in the shadows: the "*garage*" people

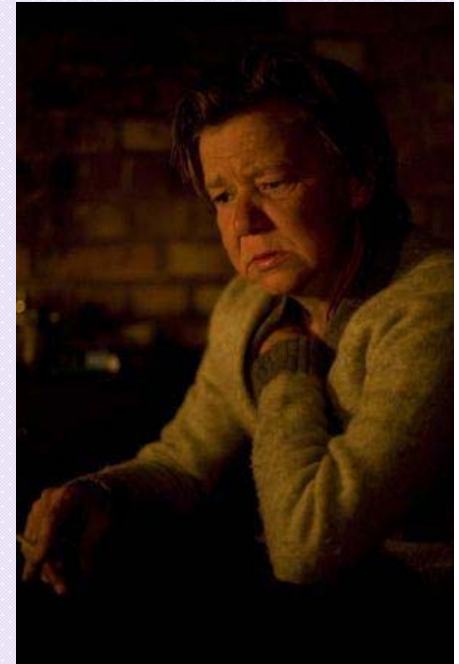
- A Polish man came in through A&E
- Minimal English
- Heavy smoker
- Chronic cough, night sweats, asthenia, haemoptysis
- SS+ve TB
- Reluctant to discuss where he had been living
- Eventually mentioned a 'garage'





The "*garage*" people

- Local abandoned garage
- Several families living inside
- All were A8 citizen (their countries acceded the EU in 2004)
- Four Polish Nationals (3 men, 1 woman)
- Two Lithuanians (1 man, 1 woman)
- Two men (1 Polish, 1 Lithuanian) were diagnosed with active pulmonary TB





What happened next?

- Local Government planned eviction
 - ◆ *"the garage is not a fit place for humans to live"*
- Not eligible for Housing (A8s, several had no ID papers)
- Several agencies – migrants' rights organisations, Community Law Centre
- Eviction order postponed on public health risk if dispersed
- Social Services asked to house them under the 1948 National Assistance Act
- Two couples were housed temporarily
- One man in hospital was discharged back to garage on D.O.T.
- Another man remained in Garage

What happened next?

- Squat closed down
- One man continued sleeping outside the garage
- Case on D.O.T. drifted to different area and eventually died
- Not an isolated event
- Alerted team to issue of A8/A10 nationals
- TB team active case finding (outreach role)
- Contacted by other agencies
- Developed a Housing contract with PCT, TB team and Local Government



Active search

- ◆ Screening
 - ❖ Port of entry
 - ❖ Primary care
 - ❖ Schools
 - ❖ RAS
 - ❖ MxU
- ◆ Outreach
 - ❖ Homeless / hostels
 - ❖ RAS Groups
 - ❖ DAT services
 - ❖ Open doors
 - ❖ Church halls
 - ❖ Courtyards
 - ❖ Squats

Open access clinic



Port of Entry



■ Not an effective screening mechanism

- ◆ Who to screen?
- ◆ Inadequate screening (X-Ray)
- ◆ Wrong data on entry (address, contact details)
- ◆ Lost to Follow up
- ◆ Poor yield

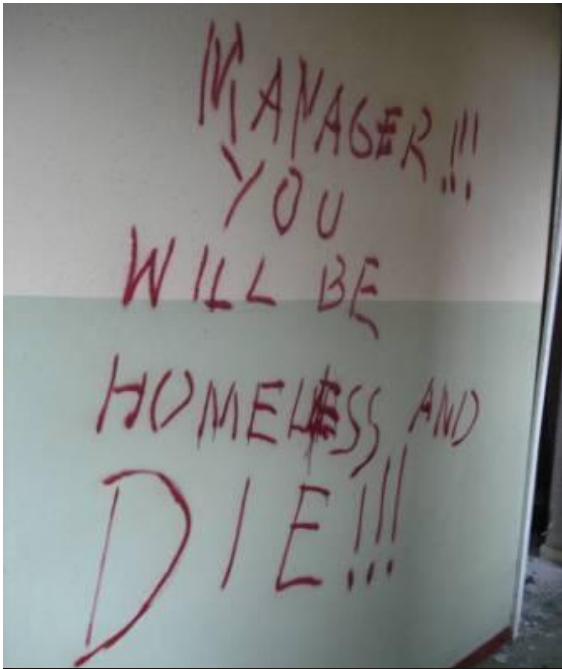
■ Six months Audit

- ◆ Partial year data:
 - Approx 800 PoE forms
 - 165 X rayed
 - 186 Examined
 - 19 referred (2 latent TB)



Squat in North Hackney

- Buccleuch House: 53 squatters
 - ◆ 42 Polish Nationals
 - ◆ 4 Ukrainian Nationals
 - ◆ 3 Lithuanian Nationals
 - ◆ 1 Latvian National
 - ◆ 1 Mexican, 1 Jamaican, 1 Colombian Nationals
- 35 were not GP registered
- High rate of A&E use
- Ethanol abuse (Hospital hand-gel)
- Victims of assault
- Work-related accidents



Managed evacuation

■ Multi-agency collaboration

◆ North East Street Drinkers Forum

❖ Health:

➤ DAT

➤ Harm minimisation team

➤ TB team

❖ Neighbourhood safety team

❖ Police

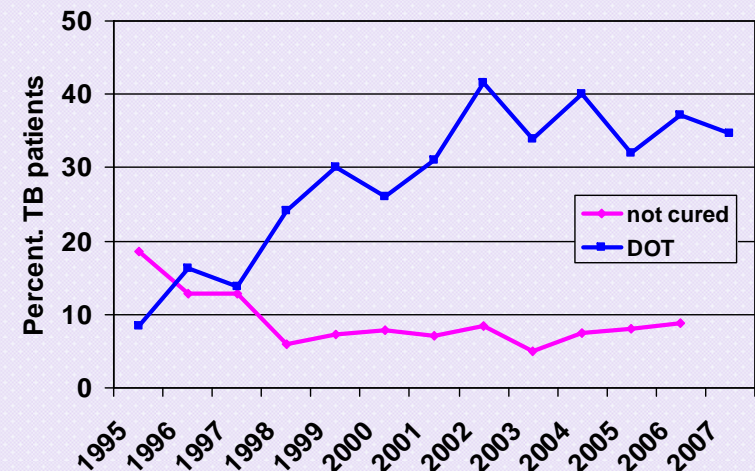
◆ Database

◆ Screening for TB

■ 44 were homeless, 4 were in temporary accommodation and 5 in privately rented

Treatment support

- Named case worker
- Initial risk assessment
 - ◆ >1 risk factor
 - ❖ DOT thrice weekly
 - TB clinic
 - Home (outreach nurse/relatives)
 - Pharmacy (methadone)
 - Partners (DAT, OH)
 - Homeless (Greenhouse)
 - Open Doors
 - At work, schools
 - ◆ Incentives
 - ❖ Transport pass
 - ❖ Food parcels / Social support
 - ❖ Home-Office support
 - ❖ ID support
 - ❖ Housing



**THINK
TB!**

Additional support

- Health Inclusion Workers (TB/HIV)
- TB awareness worker
- Hackney African Forum
- Hackney Refugee and Asylum Seekers Fora
- TB outreach workers
 - ◆ at Acute – TB Team
 - ◆ at Community – Greenhouse (Homeless services)
- Agreement with Local Government Housing
 - ◆ Emergency housing - entitled TB patients
 - ◆ Contract to house non-eligible clients

Partners and agencies

- Primary Care Trust
- Acute Trust
- Local Government
 - ◆ Housing
 - ◆ Social Services
 - ◆ DAT
 - ◆ Asylum Team
 - ◆ Harm minimisation Team
- Open Doors
- HIV/AIDS Team
- East London Mental Health Trust
- Greenhouse
- NEL TB Commissioning Unit
- Community pharmacies
- Prison services
- Home Office
- Law Centre
- Police force
- Neighbourhood safety Team
- Language Line
- TB Alert
- Refugee Council
- Community
- Voluntary sector
- Occupational Health
- Education Trust
- Health Protection Agency
- DoH Mobile X-ray Unit





Thank you.